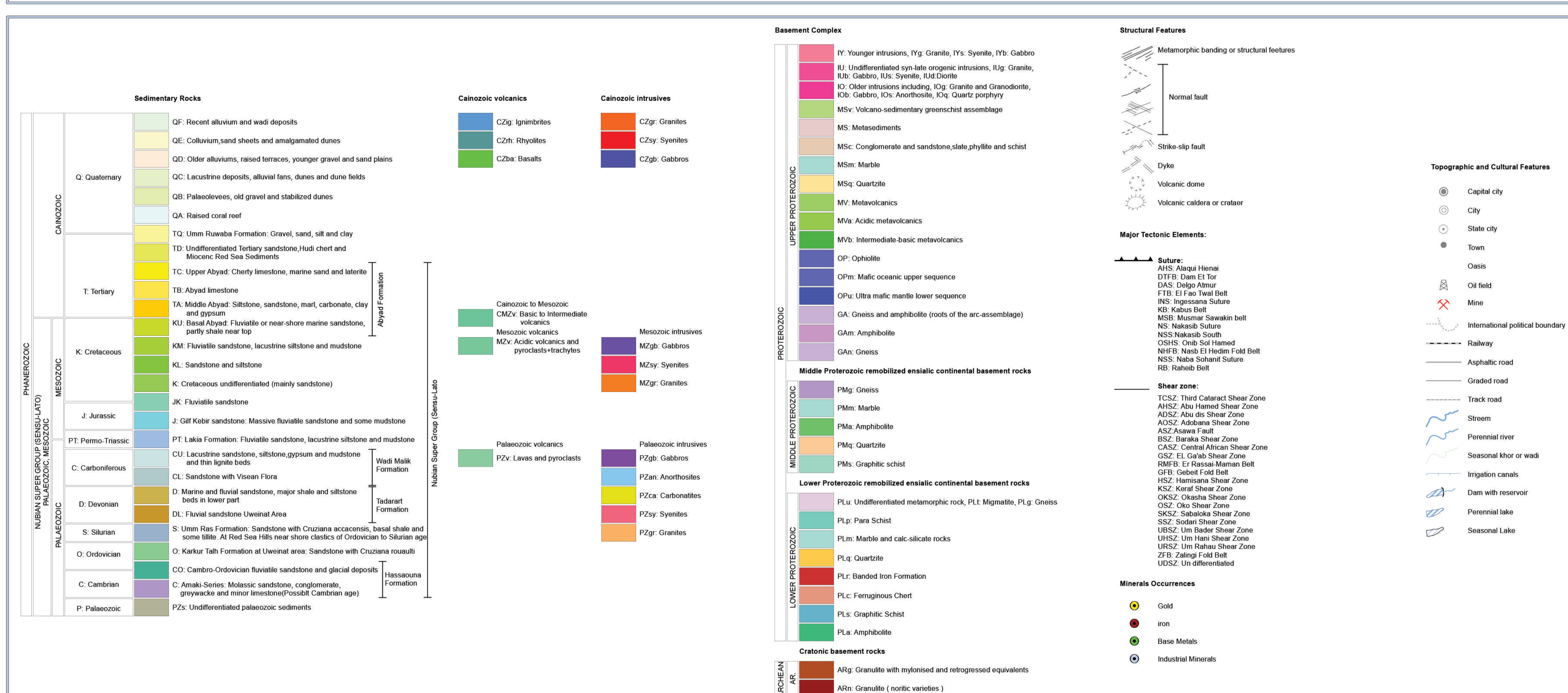
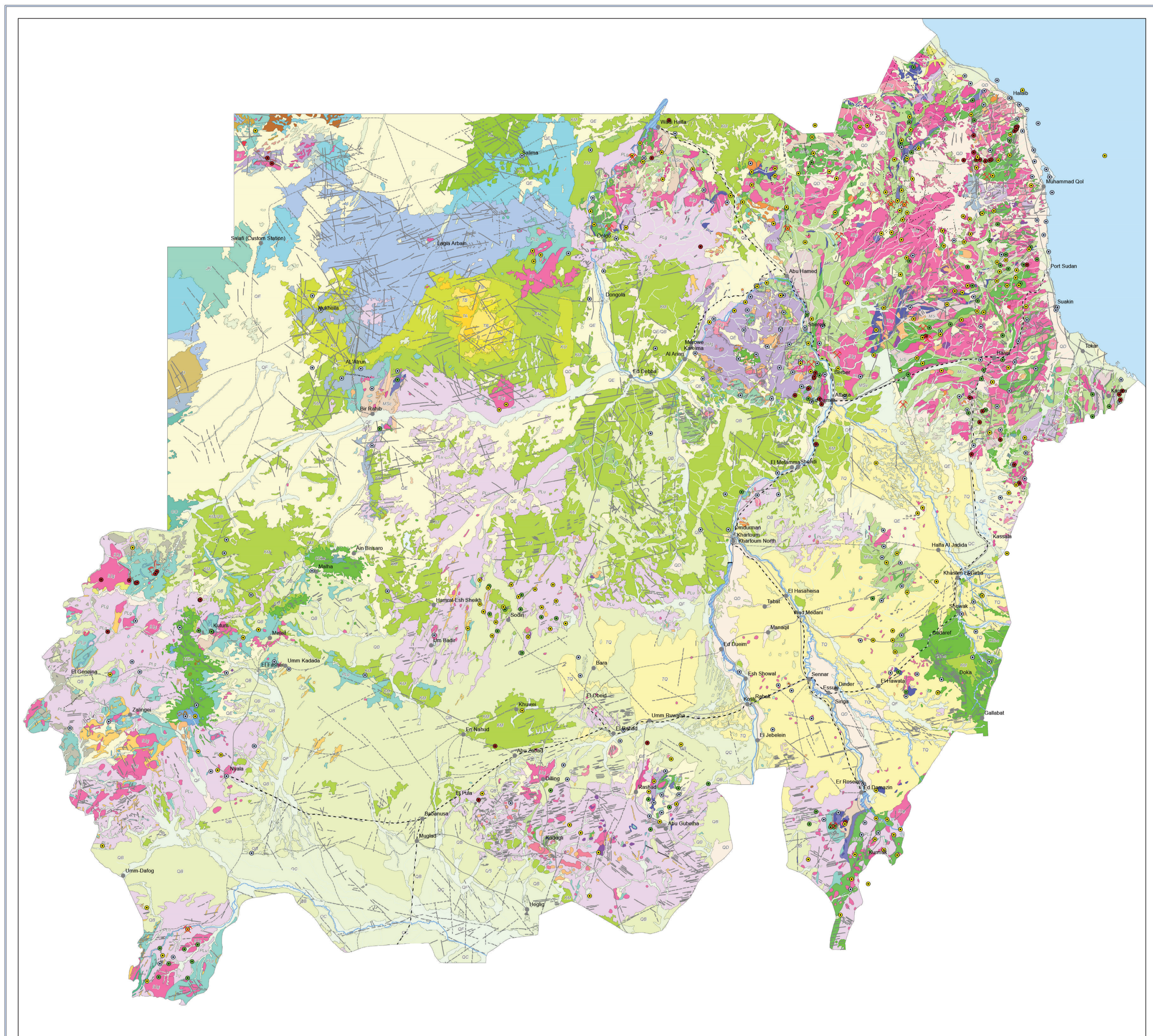


# Geological Map of the SUDAN

Geological Map of the Sudan Modified (2016)



Current map of scale 1:2,500,000 is modified after Geological Map of Sudan, 2004.

Main modifications are:  
 1. Major Tectonic Elements  
 2. Mineral Occurrences  
 3. Active Mines Locations  
 4. Simplified the Map Legend

Geological Units modified from current project of scale 1:100,000 covers 8 Quarter Million Sheets (Wadi Hafa, Kosta, Gate El Nahal, El Gader, Sadi, Umm Bedr, Shendi, Dongla).

The project will continue Updating Geological Units from Quarter Million Sheets to scale 1:100,000 in the rest of the Sudan.

Data Source:  
 1. Geological Map of Sudan, 2004  
 2. Updated Mineral Occurrences shape file, 2016 (Planning Projects Administration)  
 3. Regional Geology Administration Missions  
 4. Mosaic of Landsat ETM Images  
 5. Active Mines data from Sudanese Mineral Resources Company

Geographic Coordinate System: GCS WGS 1984  
 Datum: D\_WGS\_1984  
 Projected Coordinate System: UTM  
 Projection: Equidistant Cylindrical

Regional Geology Administration, Geological Research Authority of the Sudan, Ministry of Minerals, November, 2016

Republic of The Sudan  
**Ministry of Minerals**



**Geological Research Authority of the Sudan (GRAS)**

P.O Box: 410 Khartoum  
 Tel: +249 (1) 83 777 939, +249 155 665 144  
 Fax: +249 (1) 83 775 205  
 www.minerals.gov.sd  
 info@minerals.gov.sd